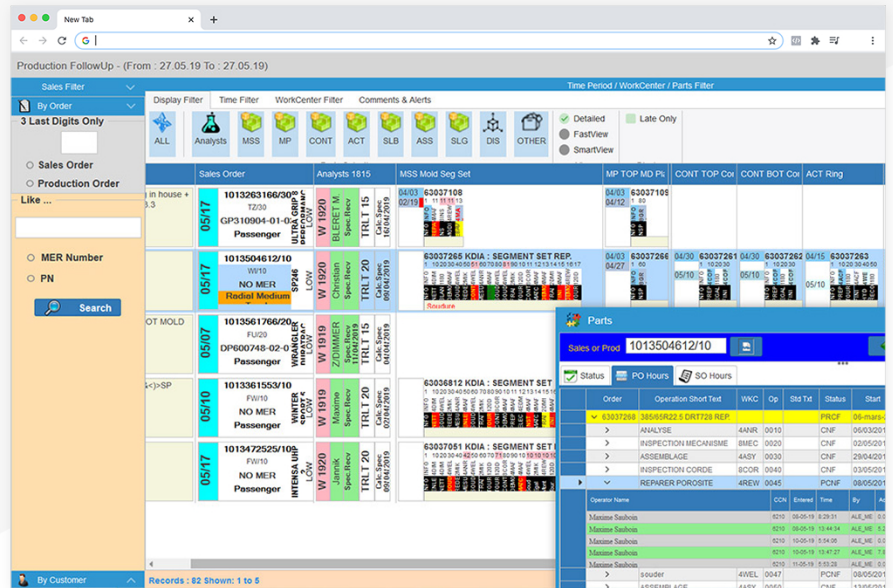


Goodyear

Wisej.NET supports Goodyear shop floor production process



Goodyear implements real-time production monitoring and shop floor RFID system using Wisej.NET in a fraction of the time when compared to other web technologies.

In one production plant, Goodyear used Wisej.NET to develop a production follow-up system, which is interfaced with SAP and MES. The system monitors around 30,000 operations in the production activities at a given time. “To follow live such an amount of data, we had to build a visual interface specific to our needs, where each shown text or color has its meaning for the production planning team. Currently the GUI has many information packed in it, that it allows people to take the right decision straight from the interface, without going to the linked systems” says Eric Mathay, lead developer for the application.

Once the team is on the shop floor, they use an RFID Bluetooth scanner attached to a tablet. The need was to have the web application shown on the tablet and update the GUI based on the scanned data in real time. From the tablet the scanned data is sent to a message server and the Wisej.NET application gets notified using the message server library running as a background task. By using Wisej.NET, updating the web applications GUI on the browser from the background task is very easy. Despite being a browser-based application, the user experience is fast and smooth with tight integration of RFID scanners similar to a local application setup. This subsystem was created in less than 2 hours!

Goodyear's software engineers also developed an internal Wiki in a matter of few weeks, featuring Active Directory authentication, hierarchical documents selection, online documents editing, full pages management, folders management, upload of documents, back-end file storage, video tagging during upload, etc. This application is currently being used as the unified document viewer for the shop floor.

Core Benefits of Wisej.NET

Wisej.NET claims to enable business web development to be much faster than other web technologies. “We can easily confirm it from our experience with the product. Through the use of the IDE and all its inherent benefits, Wisej.NET transforms visual components into accurate representation of the UI.”. Eric continues: “We found the Wisej.NET concept to be unique in the JavaScript development ecosystem. After all, the concept of a Visual IDE greatly helped to the success of the Microsoft “Visual” products line. Due to the fact that we develop for our internal needs, the latest GUI fancy stuff wasn't a key decision factor in the product selection (this doesn't mean that Wisej.NET lacks fancy UI support), but we rather focused on the speed of development.”

One of the key characteristics of Wisej.NET is its openness to other environments, which really allows for a lot of integration scenarios. In fact, “most of the time the limitation isn't the product itself but your knowledge on how to take benefit of the vast possibilities it offers.”.

Wisej.NET is constantly enhanced by listening to the developers using it in all kinds of business web applications. “In fact they have the same kind of dynamic as an open source product with a good community, but in a commercially supported product. The professional and reactive support given through the Wisej.NET forum is also an important and mandatory part of a good development framework.”.

Logoff

Refresh Node

File

Edit

Save

Screenshots

Cancel

Delete

Rename

Copy

Paste

Folders

Upload

Download

Settings

moldpedia

noidea

MediaStore

Config

Logs

Pictures_Videos

Transcripts

MO_SOURCE

Training

Arbeitsanweisungen_Instruction_de_fr

2510

2520

2530

Arbeitsanweisung

Instructions de

7UJ

Chemicals

training

Refresh Node

Edit Document

New Doc

New Folder

Delete

Rename

Copy

Paste

Arbeitsanweisungen.html

http://Arbeitsanweisungen_Instruction_de_fr\\aval\\AMPP\\Arbeitsanweisungen.html

ARBEITSANWEISUNGEN

MAJOR ELEMENT	MIDDLE ELEMENT	MINOR ELEMENT
INFO	QUALITY	Toleranzen für Formen und Ausrüstung
	QUALITY	Generelle Toleranzklasse
	QUALITY	Angaben des Oberflächenzustandes
	QUALITY	Instruktionen für 2510 - 2520 - 2530
	SAFETY	Telefonkurzwahlnummer
	SAFETY	Confined Space (Brenge Räume)
	SAFETY	Öffnung der Zugänge im Notfall / Stromausfall
	SAFETY	Chemische Produkte - Gefahrensymbole - Vereinfachte MSDS (MatRisk)
	SAFETY	Höhenarbeiten
	SAFETY	Heissarbeiten (Welding / Permat)
ALLGEMEIN (Obligatorisch)	SAFETY	Gebrauchsanweisung Defibrillator *Powerheart AED G3 Plus*
	SAFETY	Schneeräumdienst
	SAFETY	Sicherheitsregeln über Laser
	CSD	CSD presentation (Slides)
	QUALITY	INSTRUKTIONEN FÜR DAS SANDSTRAHLEN UND SCHMIEREN DER WERKZÜGE VORBEREITEN FÜR DEN TRANSPORT
	SAFETY	Evaluierungsprozess
	QUALITY	Verwaltung der Qualitätsbefunde
	SAFETY	Mewa Putzlappen
	SAFETY	Wichtige Sicherheitsregeln
	SAFETY	Benutzen der Paletten
SAFETY	Regeln bei Benutzung eines Flurförderfahrzeugs	
SAFETY	Lockout / Tagout	
SAFETY	Benutzen der Hebeinstrumente	
SAFETY	Gefahrensymbole	
SAFETY	Persönliche Schutzausrüstung (PSA)	
SAFETY	Sicherheitsregeln D2520 & D2530	
SAFETY	Wöchentliche Kontrolle der Notschalter	
SAFETY	Regale	
SAFETY	Equipment de protection individuelle par poste de travail	
QUALITY	Ausfüllen eines Inspektionsberichts	

Results Achieved

- Fast development.
- Real time server to browser updates.
- Easy integration with third party widgets.
- Rich and responsive web interface.
- Seamless integration with other systems (SAP, MES, RFID scanners).



info@wisej.com | wisej.com

+1-202-449-3778 | +1-800-440-7049

MAJOR ELEMENT	MIDDLE ELEMENT	MINOR ELEMENT	REFERENCE WIN	KNOWLEDGE(K) SKILL(S)	RELATE
	QUALITY	Toleranzen für Formen und Ausrüstung	WIN-0001		
	QUALITY	Generelle Toleranzklasse	WIN-0003		
	QUALITY	Angaben des Oberflächenzustandes	WIN-0011		
	QUALITY	Instruktionen für 2510 - 2520 - 2530	WIN-0073		
	SAFETY	Telefonkurzwahlnummer	WIN-0144		
	SAFETY	Confined Space (Beengte Räume)	WIN-0157		
	SAFETY	Öffnung der Zugänge im Notfall / Stromausfall	WIN-0162		
	SAFETY	Chemische Produkte - Gefahrensymbole - Vereinfachte MSDS (MatRisk)	WIN-0164		
	SAFETY	Höhenarbeiten	WIN-0183		
	SAFETY	Heissarbeiten (Welding Permit)	WIN-0196		
	SAFETY	Gebrauchsanweisung Defibrillator "Powerheart AED G3 Plus"	WIN-0226		
	SAFETY	Schneeräumdienst	WIN-0270		
	SAFETY	Sicherheitsregeln über 1.000	WIN-0271		

About Goodyear Tire

The Goodyear Tire & Rubber Company is an American multinational tire manufacturing company founded in 1898 by Frank Seiberling and based in Akron, Ohio.

Goodyear manufactures tires for automobiles, commercial trucks, light trucks, motorcycles, SUVs, race cars, airplanes, farm equipment and heavy earth-mover machinery. It also produced bicycle tires from its founding until 1976. As of 2017, Goodyear is one of the top four tire manufacturers along with Bridgestone (Japan), Michelin (France) and Continental (Germany).

About Ice Tea Group

Ice Tea Group LLC, located in Washington DC, is a worldwide specialist for enterprise application modernization and business web frameworks.

We help developers and organizations stay competitive. Our mission is to strengthen and increase the value of enterprise-scale software assets by providing modernization paths throughout technology changes.

Since 1998, our services and frameworks have been used by more than 600 companies, in 4,800+ applications, over 50 countries. Some of our clients are: Fujitsu, Lidl, Goodyear, Xerox, Skanska, Volvo, Merck, GE Healthcare, IFS, Air New Zealand, CBS, SAGE, Ericsson, Siemens, ASFINAG, Markel, Ameriprise, Europ Assistance.

iceteagroup.com

Disclaimer: Ice Tea Group and Goodyear Tire & Rubber Company make no guarantee, warranty or representations. Any projections or estimates are opinion and do not guarantee the current or future performance of the software or represent any kind of contractual obligation on our part. You should conduct an independent investigation of the software to determine to your satisfaction the suitability of the software for your needs.