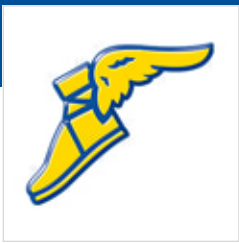




# Case Study

## Wisej supports Goodyear shop floor production process.



Goodyear implements real-time production monitoring and shop floor RFID system using Wisej in a fraction of the time when compared to other web technologies.

In one production plant, Goodyear used Wisej to develop a production follow-up system, which is interfaced with SAP and MES. The system monitors around 30,000 operations in the production activities at a given time.

Once the team is on the shop floor, they use an RFID Bluetooth scanner attached to a tablet. The need was to have the web application shown on the tablet and update the GUI based on the scanned data in real time.

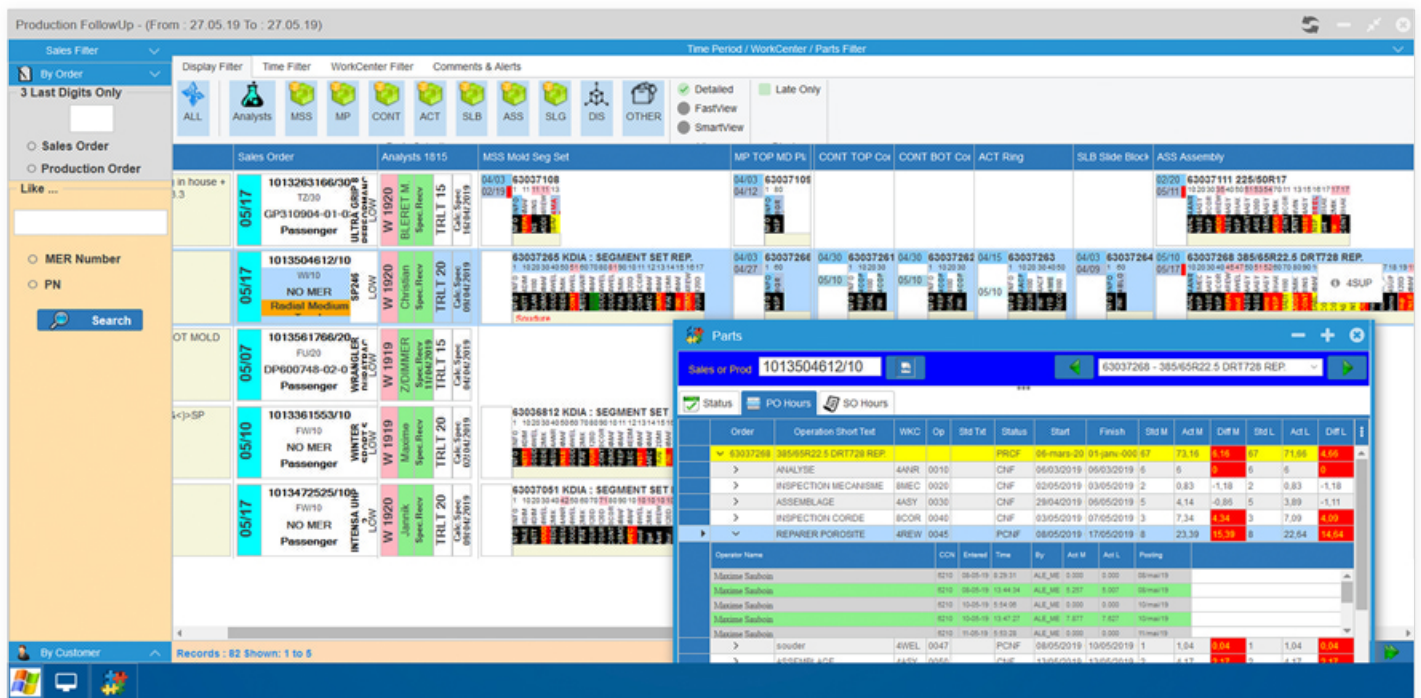
“To follow live such an amount of data, we had to build a visual interface specific to our needs, where each shown text or color has its meaning for the production planning team. Currently the GUI has many information packed in it, that it allows people to take the right decision straight from the interface, without going to the linked systems” says Eric Mathay, lead developer for the application.

Order	Operation Short Text	WKC	Op	Stk Tot	Status	Start	Finish	Stk M	Act M	Diff M	Stk L	Act L
63037268	38545R22 5 DRT728 REP				PRCF	05-mars-20	05-janv-000 87	73,18	0,14	87	71,88	
>	ANALYSE	4AVR	0010		CNF	06/03/2019	06/03/2019	6	6	0	6	6
>	INSPECTION MECANISME	BMEC	0020		CNF	03/05/2019	03/05/2019	2	0,83	-1,18	2	0,83
>	ASSEMBLAGE	ASBY	0030		CNF	29/04/2019	06/05/2019	5	4,14	-0,86	5	3,89
>	INSPECTION CORDE	BCOR	0040		CNF	03/05/2019	07/05/2019	3	7,34	4,34	3	7,09
>	REPARER POROSITE	4REW	0045		PCNF	08/05/2019	17/05/2019	8	23,39	15,38	8	22,64
Operator Name												
>	Maxime Saubois		8210	08-09-19	8:29:51	ALX_M6	0:000	0:000	08-mars-19			
>	Maxime Saubois		8210	08-09-19	10:44:34	ALX_M6	0:207	3:307	08-mars-19			
>	Maxime Saubois		8210	08-09-19	1:54:38	ALX_M6	0:300	0:300	10-mars-19			
>	Maxime Saubois		8210	08-09-19	10:41:27	ALX_M6	7:217	7:827	08-mars-19			
>	Maxime Saubois		8210	08-09-19	8:53:28	ALX_M6	0:000	0:000	08-mars-19			
>	Isouder	4WEL	0047		PCNF	08/05/2019	10/05/2019	1	1,04	0,94	1	1,04
>	ASSEMBLAGE	ASBY	0061		CNF	13/06/2019	13/06/2019	3	4,47	0,97	3	4,47

From the tablet the scanned data is sent to a message server and the Wisej application gets notified using the message server library running as a background task. By using Wisej, updating the web applications GUI on the browser from the background task is very easy. Despite being a browser-based application, the user experience is fast and smooth with tight integration of RFID scanners similar to a local application setup. This subsystem was created in less than 2 hours!

Goodyear's software engineers also developed an internal Wiki in a matter of few weeks, featuring Active Directory authentication, hierarchical documents selection, online documents editing, full pages management, folders management, upload of documents, back-end file storage, video tagging during upload, etc.

This application is currently being used as the unified document viewer for the shop floor.



## Core Benefits of Wisej

Wisej claims to enable business web development to be much faster than other web technologies.

“We can easily confirm it from our experience with the product. Through the use of the IDE and all its inherent

benefits, Wisej transforms visual components into accurate representation of the UI”. Eric continues: “We found the Wisej concept to be unique in the JavaScript development ecosystem. After all, the concept of a Visual IDE greatly helped to the success of the Microsoft

MAJOR ELEMENT	MIDDLE ELEMENT	MINOR ELEMENT	REFERENCE WIN	KNOWLEDGE(K) SKILL(S)	RELATED DOCS
INFO	QUALITY	Toleranzen für Formen und Ausrüstung	WIN-0061		
	QUALITY	Generelle Toleranzklasse	WIN-0063		
	QUALITY	Angaben des Oberflächenzustandes	WIN-0011		
	QUALITY	Instruktionen für 2510 - 2520 - 2530	WIN-0073		
	SAFETY	Telefonkurzwahlnummer	WIN-0144		
	SAFETY	Confined Space (Beengte Räume)	WIN-0137		
	SAFETY	Öffnung der Zugänge im Notfall / Stromausfall	WIN-0162		
	SAFETY	Chemische Produkte - Gefahrensymbole - Vereinfachte MSDS (MatRisk)	WIN-0164		
	SAFETY	Heissarbeiten (Welding Permit)	WIN-0183		
	SAFETY	Gebrauchsanweisung Defibrillator *Powerheart AED G3 Plus*	WIN-0276		
	SAFETY	Schwerstarndienst	WIN-0270		
	SAFETY	Sicherheitsregeln über Laser	WIN-0274		
	ALLGEMEIN (Obligatorisch)	CSD	CSD presentation (Slides)	CSD	S
QUALITY		INSTRUKTIONEN FÜR DAS SANDSTRAHLEN UND SCHMIEREN DER WERKSTÜCKE UND DAS VORBEREITEN FÜR DEN TRANSPORT	WIN-0120	K	
SAFETY		Evakuierungsprozedur	WIN-0127	S,K	
QUALITY		Verwaltung der Qualitätsbefunde	WIN-0138	S	
SAFETY		Mewa Putzlappen	WIN-0142	S	
SAFETY		Wichtige Sicherheitsregeln	WIN-0147	K	
SAFETY		Benutzen der Paletten	WIN-0151		
SAFETY		Regeln bei Benutzung eines Flurförderfahrzeugs	WIN-0152	S	MOF0481
SAFETY		Lockout / Tagout	WIN-0154	K	
SAFETY		Benutzen der Hebeinstrumente	WIN-0156	S,K	
SAFETY		Gefahrensymbole	WIN-0165	K	
SAFETY		Persönliche Schutzausrüstung (PSA)	WIN-0166	S,K	
SAFETY		Sicherheitsregeln D2520 & D2530	WIN-0193	K	
SAFETY		Wöchentliche Kontrolle der Notschalter	WIN-0268	S,K	MOF
SAFETY		Regale	WIN-0362	S,K	
SAFETY		Equipment de protection individuelle par poste de travail	WIN-0364	S,K	
QUALITY		Ausfüllen eines Insektionsberichtes	WIN-0579	S	WIN0081 (General)

"Visual" products line. Due to the fact that we develop for our internal needs, the latest GUI fancy stuff wasn't a key decision factor in the product selection (this doesn't mean that Wisej lacks fancy UI support), but we rather focused on the speed of development."

One of the key characteristics of Wisej is its openness to other environments, which really allows for a lot of integration scenarios. In fact, "most of the time the limitation isn't the product itself but your knowledge on how to take benefit of the vast possibilities it offers."

Wisej is constantly enhanced by listening to the developers using it in all kinds of business web applications. "In fact they have the same kind of dynamic as an open source product with a good community, but in a commercially supported product. The professional and reactive support given through the Wisej forum is also an important and mandatory part of a good development framework."

## Results Achieved

- Fast development
- Real time server to browser updates
- Easy integration with third party widgets
- Rich and responsive web interface
- Seamless integration with other systems (SAP, MES, RFID scanners)

info@wisej.com | wisej.com  
+1-202-449-3778 | 1-800-440-7049



The screenshot shows a web browser window displaying a document titled "Arbeitsanweisungen.html". The document content includes a yellow header with the text "ARBEITSWEISE WORKCENTER 4MPF" and "LAST SAVE: 5/10/2019 11:21:18 AM". Below the header is a table with the following structure:

MAJOR ELEMENT	MIDDLE ELEMENT	MINOR ELEMENT	REFERENCE WIN	KNOWLEDGE(K) SKILL(S)	RELATE
INFO	QUALITY	Toleranzen für Formen und Ausrüstung	WIN-0001		
	QUALITY	Generelle Toleranzklasse	WIN-0003		
	QUALITY	Angaben des Oberflächenzustandes	WIN-0011		
	QUALITY	Instruktionen für 2510 - 2520 - 2530	WIN-0023		
	SAFETY	Telefonkurznummer	WIN-0164		
	SAFETY	Confined Space (Beengte Räume)	WIN-0157		
	SAFETY	Öffnung der Zugänge im Notfall / Stromausfall	WIN-0162		
	SAFETY	Chemische Produkte - Gefahrensymbole - Vereinfachte MSDS (MaßRisk)	WIN-0164		
	SAFETY	Höhenarbeiten	WIN-0183		
	SAFETY	Heissarbeiten (Welding Permit)	WIN-0196		
	SAFETY	Gebrauchsanweisung Defibrillator "Powerheart AED G3 Plus"	WIN-0226		
	SAFETY	Schneeräumdienst	WIN-0270		
	SAFETY	Sicherheitsregeln über 1 sear	WIN-0374		

## About Goodyear

The Goodyear Tire & Rubber Company is an American multinational tire manufacturing company founded in 1898 by Frank Seiberling and based in Akron, Ohio.

Goodyear manufactures tires for automobiles, commercial trucks, light trucks, motorcycles, SUVs, race cars, airplanes, farm equipment and heavy earth-mover machinery. It also produced bicycle tires from its founding until 1976.

As of 2017, Goodyear is one of the top four tire manufacturers along with Bridgestone (Japan), Michelin (France) and Continental (Germany).

Disclaimer: Ice Tea Group and Goodyear Tire & Rubber Company make no guarantee, warranty or representations. Any projections or estimates are opinion and do not guarantee the current or future performance of the software or represent any kind of contractual obligation on our part. You should conduct an independent investigation of the software to determine to your satisfaction the suitability of the software for your needs.

## About Ice Tea Group

Ice Tea Group LLC, located in Washington DC, is a worldwide specialist for enterprise application modernization and business web frameworks.

We help developers and organizations stay competitive. Our mission is to strengthen and increase the value of enterprise-scale software assets by providing modernization paths throughout technology changes.

Since 1998, our services and frameworks have been used by more than 600 companies, in 4,800+ applications, over 50 countries. Some of our clients are: Fujitsu, Goodyear, Xerox, Skanska, Volvo, Merck, GE Healthcare, IFS, Air New Zealand, CBS, SAGE, Ericsson, Siemens, ASFINAG, Markel, Ameriprise, Europ Assistance.

 **Wisej.com** +1-202-449-3778 | 1-800-440-7049

© Ice Tea Group LLC | All Rights Reserved